



DentaDrive 100V S15

Electric Direct Tool Change

Item no. **153EG011**

HF-Spindle for high-speed milling, -grinding, -drilling, -engraving

Bearings

| | |
|---------------------------|------------------|
| Hybrid ball bearing (pcs) | 2 |
| Lifetime lubricated | maintenance free |

Motor

| | |
|--|---|
| Motor technology | 3-phase asynchronous drive (no brushes or sensors) |
| Frequency | 1.667 Hz |
| Motor poles (pairs) | 1 |
| Rated rotation speed | 100.000 rpm |
| Acceleration/braking value Per second | 10 000 rpm (other values by consultation) |

Power values

Spindle holder cooled

| | Pmax./5s | S6-60% | S1-100% | |
|-------------|----------|--------|---------|------|
| Rated power | 0,32 | 0,31 | 0,3 | [kW] |
| Torque | 0,065 | 0,063 | 0,061 | [Nm] |
| Voltage | 34 | 34 | 34 | [V] |
| Current | 10 | 9,8 | 9,5 | [A] |

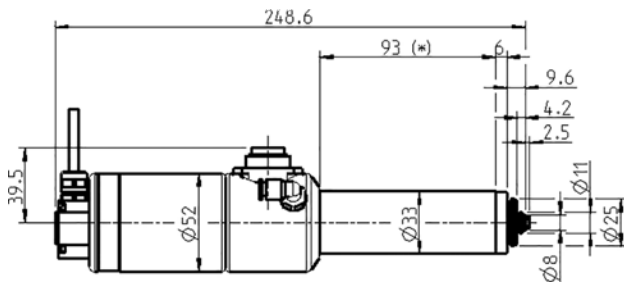
Power values

Compressed air cooled

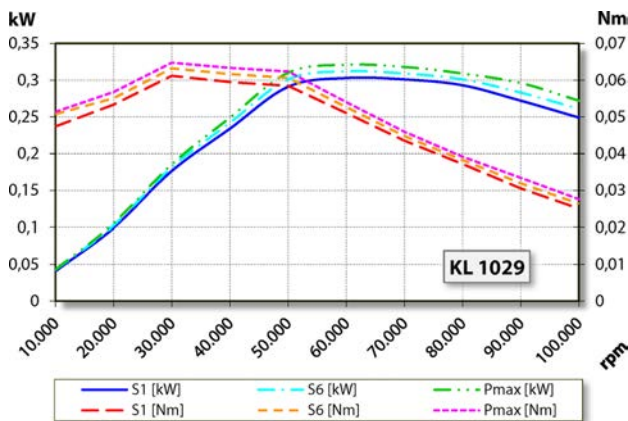
| | Pmax./5s | S6-60% | S1-100% | |
|-------------|----------|--------|---------|------|
| Rated power | 0,25 | 0,23 | 0,2 | [kW] |
| Torque | 0,039 | 0,037 | 0,033 | [Nm] |
| Voltage | 33 | 33 | 33 | [V] |
| Current | 8,2 | 7,7 | 6,9 | [A] |

DentaDrive 100V S15

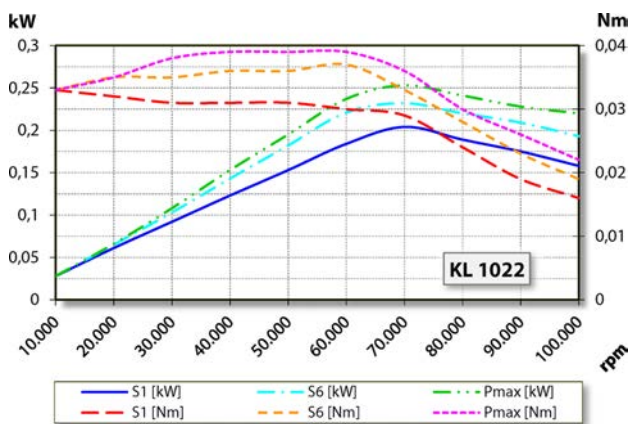
Electric Direct Tool Change
Item no. **153EG011**



Dimensions



Performance Diagram
Spindle holder cooled



Performance Diagram
Compressed air cooled

Measurement of power is funded by in-house testing.

Characteristics

| | |
|--|--|
| Motor protection | PTC 100°C or Pt1000 Optional accessory |
| Housing | Stainless steel/ aluminium |
| Housing diameter | 33 mm |
| Cooling | Compressed air cooled |
| Heat dissipation | Via the housing |
| Housing temperature | < + 50° C |
| Ambient temperature | + 10°C ... + 45°C |
| Sealing air | |
| Protection category (sealing air turned on) | IP54 |
| Taper cleaning | Optional accessories |
| ESD protection | Optional accessories |
| Tool change | Electric Direct Tool Change |
| Collet type | 5,1P-5° Optional accessories |
| Clamping range up to | 3.5 mm (1/8") |
| Clockwise | |
| Coupler plug | 7-pin (Amphenol C16-1) |
| Weight | ~ 1,8 kg |
| Inner taper run out | < 1 μ |