



DentaDrive S 100 S21

Pneumatic direct change

Item no. **133EG023**

HF-Spindle for high-speed milling, -grinding, -drilling, -engraving

Bearings

Hybrid ball bearing (pcs)	2
Lifetime lubricated	maintenance free

Motor

Motor technology	3-phase synchronous drive (no brushes or sensors)
Frequency	1.667 Hz
Motor poles (pairs)	1
Rated rotation speed	100.000 rpm
Acceleration/braking value Per second	10 000 rpm (other values by consultation)

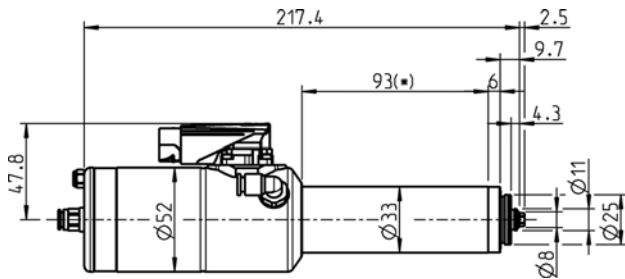
Power values

Compressed air cooled

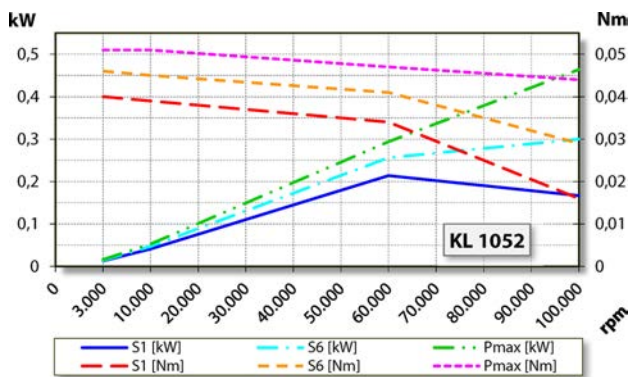
	Pmax./5s	S6-60%	S1-100%	
Rated power	0,46	0,3	0,21	[kW]
Torque	0,051	0,046	0,04	[Nm]
Voltage	43	42	39	[V]
Current	9	8	7	[A]

DentaDrive S 100 S21

Pneumatic direct change
Item no. **133EG023**



Dimensions



Performance Diagram

Compressed air cooled

Measurement of power is funded by in-house testing.

Characteristics

Motor protection	PTC 100°C or Pt1000 Optional accessory
Housing	Stainless steel/ aluminium
Housing diameter	33 mm
Cooling	Compressed air cooled
Heat dissipation	Via the spindle holder
Housing temperature	< + 55° C
Ambient temperature	+ 10°C ... + 45°C
Sealing air	
Protection category (sealing air turned on)	IP54
Taper cleaning/blow air	Optional accessories
ESD protection	Optional accessories
Tool change	Pneumatic direct change
Collet type	5,1P-5° Optional accessories
Clamping range up to	3.5 mm (1/8")
Clockwise	
Coupler plug	9-pin (I-TEC)
Weight	~ 1,2 kg
Inner taper run out	< 1 μ